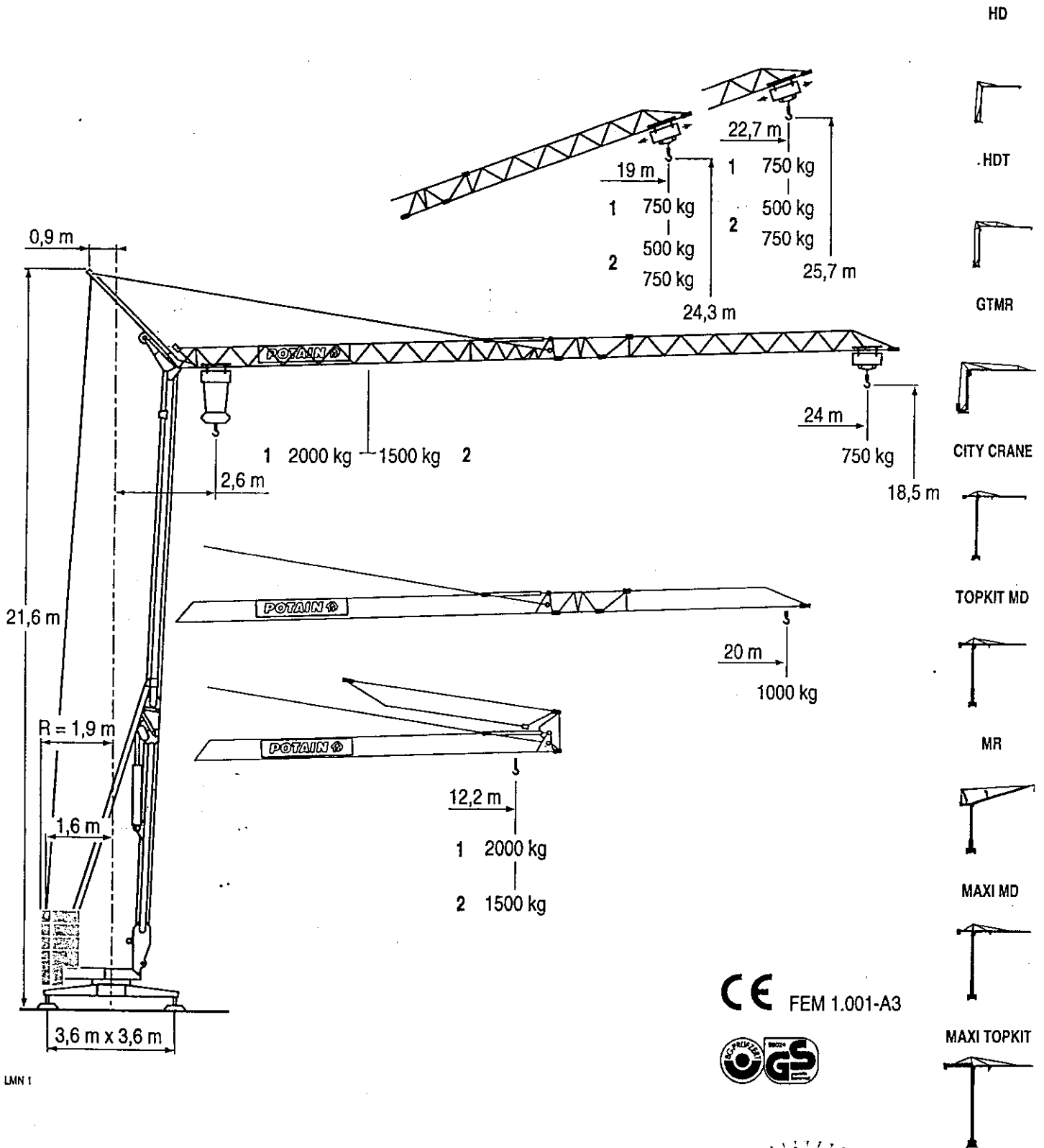
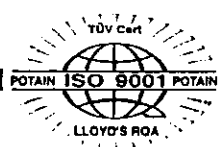


HD 16 C



CE FEM 1.001-A3



LMN 1

POTAIN

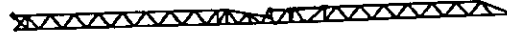
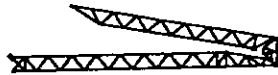
Courbes de charges
Lastkurven



Load diagrams
Curvas de cargas



Curve di carico
负荷曲线



1 2000 kg

24 m	2,6	▶	12,2 m	11,1	12	13	14	15	16	17	18	19	20	21	22	23	24 m
▲▲▲			2000 kg	2000	1815	1639	1492	1367	1260	1167	1085	1013	949	891	840	793	750 kg

20 m	2,6	▶	12,2 m	11,5	12	13	14	15	16	17	18	19	20 m
▲▲▲			2000 kg	2000	1906	1722	1568	1438	1325	1228	1143	1067	1000 kg

2 1500 kg

24 m	2,6	▶	12,2 m	13,9	14	15	16	17	18	19	20	21	22	23	24 m
▲▲▲			1500 kg	1500	1492	1367	1260	1167	1085	1013	949	891	840	793	750 kg

20 m	2,6	▶	12,2 m	14	15	16	17	18	19	20 m
▲▲▲			1500 kg	1500	1438	1325	1228	1143	1067	1000 kg

LMN 1

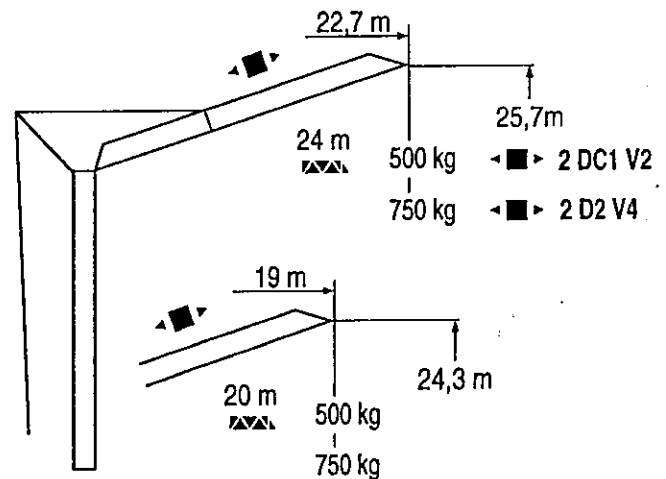
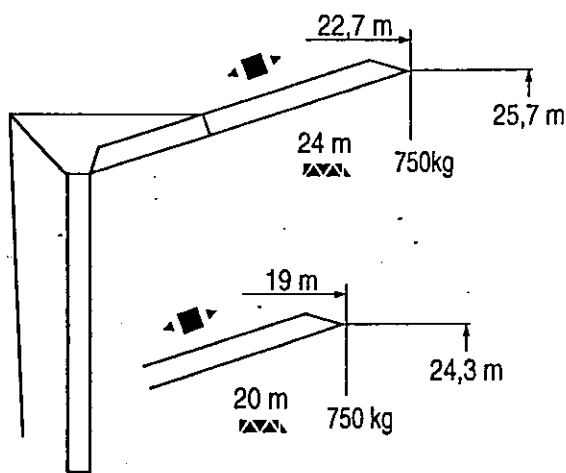
Flèche relevée
Ausleger in Steilstellung



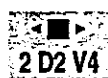
Luffing jib
Flecha izada



Braccio impennato
起升吊臂



2000 kg



2 D2 V4



1500 kg



2 DC1 V2



2 D2 V4

LMN 1

Chariot distributeur



Traversing trolley



Carrellino distributore



Verfahrbare laufkatze



Carro distribuidor



变幅小车



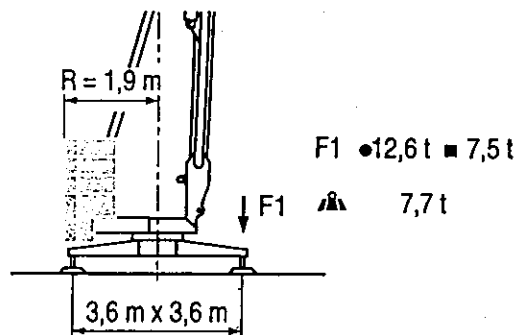
HD 16 C

POTAIN

Réactions
Eckdrücke

Reactions
Reacciones

Reazioni
反力



LMN 1

● Réactions en service	Ⓜ	Reactions in service	Ⓜ	Reazioni in servizio	Ⓜ
■ Réactions hors service	Ⓜ	Reactions out of service	Ⓜ	Reazioni fuori servizio	Ⓜ
⚙️ A vide sans lest ni train de transport avec flèche et hauteur maximum	Ⓜ	Without load, ballast or transport axles, with maximum jib and maximum height.	Ⓜ	A vuoto, senza zavorra ne assali di trasporto con braccio massimo e altezza massima	Ⓜ
● Reaktionskräfte in Betrieb	Ⓜ	Reacciones en servicio	Ⓜ	工作状态下的反应	Ⓜ
■ Reaktionskräfte außer Betrieb	Ⓜ	Reacciones fuera de servicio	Ⓜ	非工作状态下的反应	Ⓜ
⚙️ Ohne Last, Ballast und Transportachse, mit Maximalausleger und Maximalhöhe.	Ⓜ	Sin carga, sin lastre, ni tren de transporte, flecha y altura máxima.	Ⓜ	空载无压重也无运输车有吊臂和最大高度	Ⓜ

Mécanismes
Antriebe

Mechanisms
Mecanismos

Meccanismi
机构

							ch - PS hp	kW
⚙️	9 PC 10	2000 kg	m/min kg	6,6 2000	20 2000	40 1000	8,2	6
	6 PC 7	1500 kg	m/min kg	9,5 1500	19 1500	38 750	6	4,4
⚙️	2 D2 V4	2000/1500 kg	m/min	18 - 36			2	1,5
	2 DC1 V2	1500 kg	m/min	30			2	1,5
⚙️	RVF 30	—	tr/min U/min rpm	0 → 1			1,5	1,1

CEI 38	IEC 38	kVA	
400 V(+6% -10%) 50 Hz	9 PC: 12 kVA 6 PC: 10 kVA		84/534 - 87/405

LMN 1

● Levage	Ⓜ	Hoisting	Ⓜ	Sollevamento	Ⓜ
⚙️ Distribution	Ⓜ	Trolleying	Ⓜ	Distribuzione	Ⓜ
⚙️ Orientation	Ⓜ	Stewing	Ⓜ	Rotazione	Ⓜ
⚙️ Conforme aux directives CEE 84/534 et 87/405 sur le niveau acoustique	Ⓜ	In compliance with the EEC 84/534 and 87/405 Instructions on noise level	Ⓜ	Conforme alle direttive CEE 84/534 e 87/405 sul livello acustico	Ⓜ
● Heben	Ⓜ	Elevación	Ⓜ	起升	Ⓜ
⚙️ Katzfahren	Ⓜ	Distribución	Ⓜ	变幅	Ⓜ
⚙️ Schwenken	Ⓜ	Orientación	Ⓜ	回转	Ⓜ
⚙️ Gemäss EWG-Richtlinien 84/534 und 87/405 für den Schall-Leistungspegel	Ⓜ	Conforme con las directivas CEE 84/534 y 87/405 sobre el nivel acustico	Ⓜ	符合 CEE 84/534 - CEE 87/405 声响度规定	Ⓜ

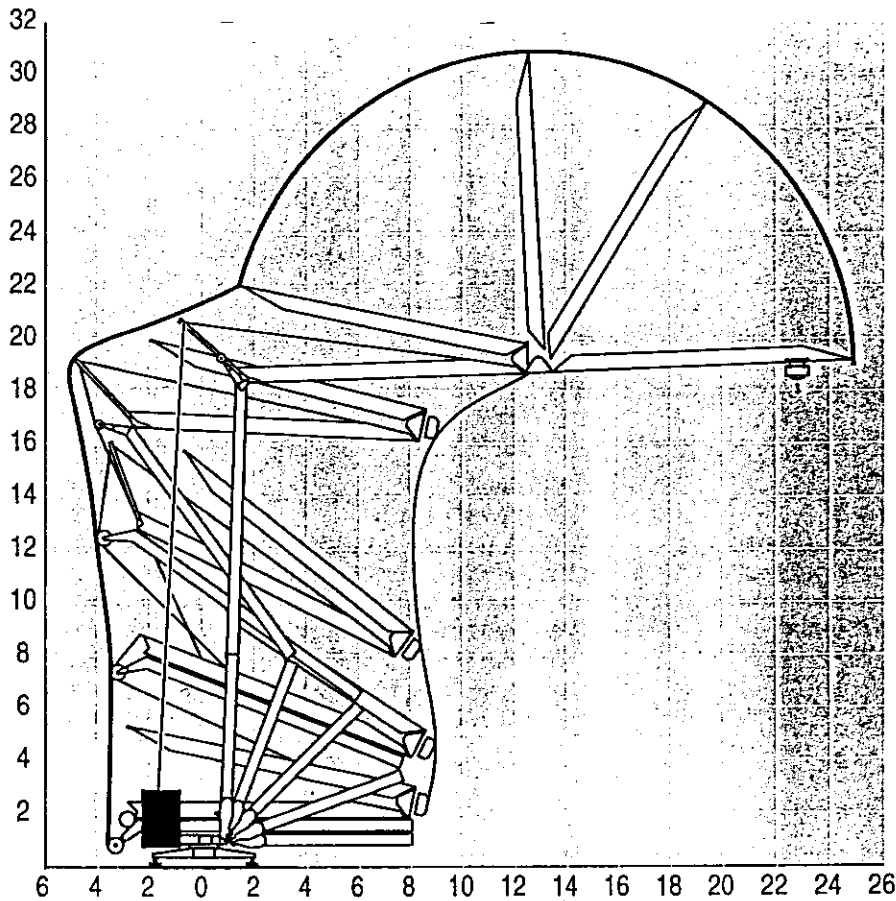
Montage
Montage



Erection
Montaje



Montaggio
安装



LMN 1

Transport
Transport



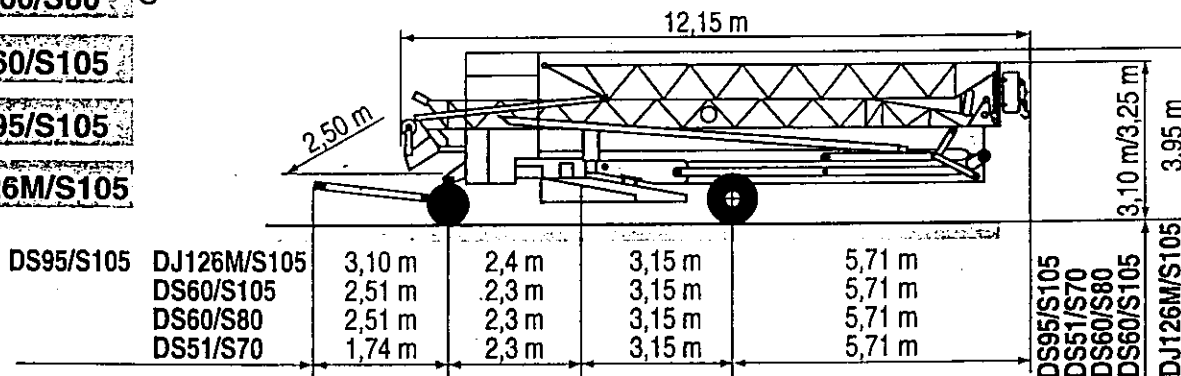
Transport
Transporte



Trasporto
运输



- DS51/S70 ○
- DS60/S80 ○
- DS60/S105
- DS95/S105
- DJ126M/S105



LMN 1

- Chantier
- Baustelle



Site
Obra



Cantiere
工地运输



POTAIN
 GROUPE LEGRIS INDUSTRIES

HD 16 C

Copyright. Reproduction interdite © POTAIN 1997

18, Rue de Charbonnières, B.P. 173-F
 69132 ECULLY Cedex
 Tél. (33)04.72.20.20.20
 Fax (33)04.72.20.20.00
 http://www.potain.fr
 E-mail : mkt@potain.fr

Deutschland
 POTAIN GmbH Tel : 06.105.704.0
 Italia
 POTAIN S.p.A. Tel : 039.65.631
 China
 Zhangjiagang POTAIN Tel : 520.877.1451

Réf. 1997.44 LMN 1

Modificazioni riservate. Änderungen vorbehalten. Subject to modification. Modifiche riservate.

Printed in France.