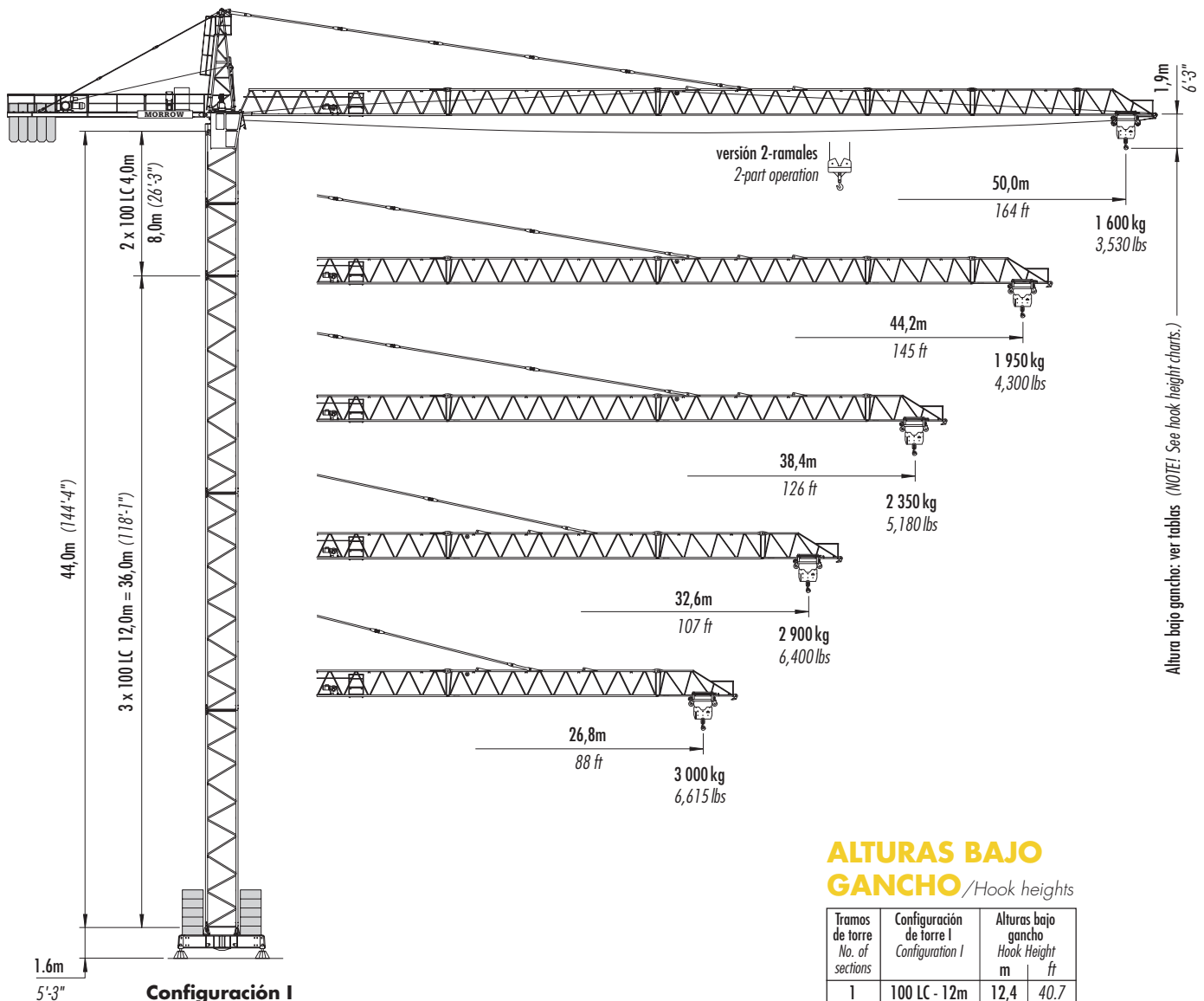


# LIEBHERR 100 LC

## GRÚA TORRE / Tower Crane



**Configuración I**  
 Versión estacionaria  
 (stationary)  
 sobre husillos regulables  
 (on adjustable screw jacks)  
 (altura máxima bajo gancho)  
 (maximum height under hook)  
 44,4m (145'-8")

**ESTACIONARIA**  
 Freestanding - Stationary

### ALTURAS BAJO GANCHO / Hook heights

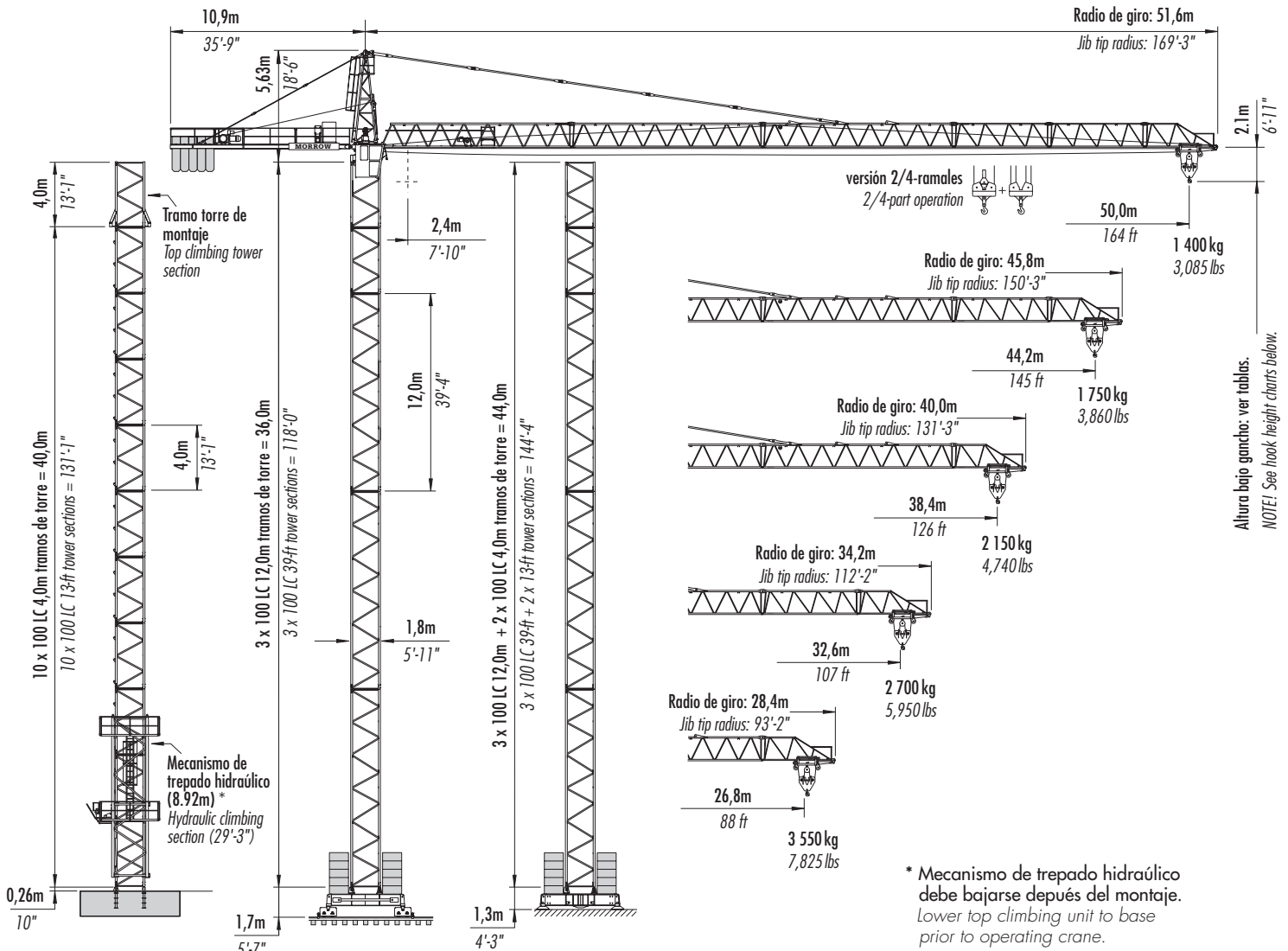
Tramos de torre No. of sections	Configuración de torre I Configuration I	Alturas bajo gancho Hook Height	
		m	ft
1	100 LC - 12m	12,4	40.7
2	100 LC - 12m	24,4	80.1
3	100 LC - 12m	36,4	119.4
4	100 LC - 4m	40,4	132.5
5	100 LC - 4m	44,4	145.7

Otras configuraciones de torre posibles. Consultar con Morrow.

Other tower combinations are possible. Contact Morrow for additional information.



# Morrow Maquinarias



Altura bajo gancho: ver tablas.  
NOTE: See hook height charts below.

\* Mecanismo de trepado hidráulico debe bajarse después del montaje.  
Lower top climbing unit to base prior to operating crane.

- Configuración II**  
Versión estacionaria (stationary) sobre pies de anclaje (on anchors) altura máxima bajo gancho (maximum height under hook) 43,1m (141'5")
- Configuración III**  
Versión móvil (rail travelling) sobre railes altura máxima bajo gancho (maximum height under hook) 44,5m (146'0")
- Configuración IV**  
Versión estacionaria (stationary) sobre fundaciones de hormigón (on concrete footings) altura máxima bajo gancho (maximum height under hook) 44,1m (144'8")

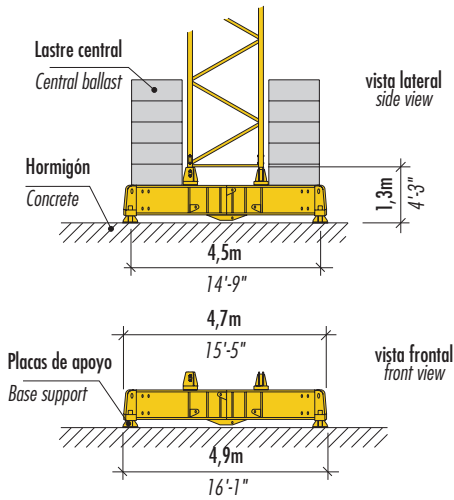
Consultar el manual de instrucciones «Grúa torre 100 LC» antes del montaje, manejo y desmontaje de la grúa.

Please consult crane's operation manual before erecting, operating and dismantling crane.

Otras configuraciones de torre son posibles. Consultar con Morrow.  
Other tower combinations are possible. Contact Morrow for additional information.

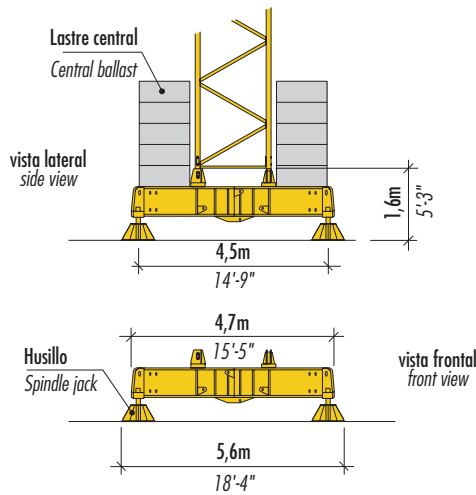
# Configuraciones

# LIEBHERR 100 LC



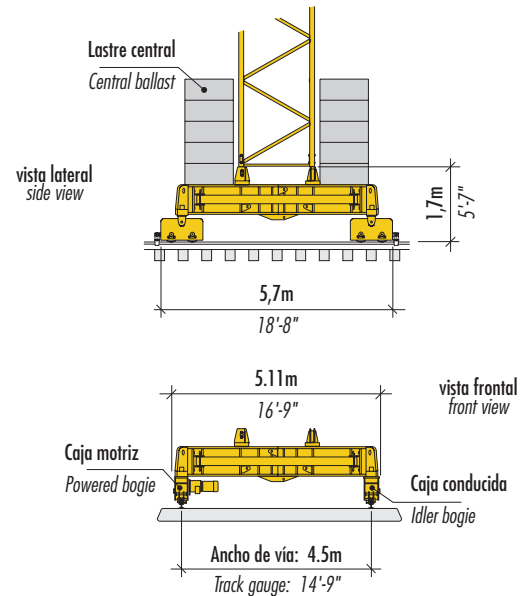
## VISTAS del CARRETÓN

versión estacionaria sobre fundación de hormigón  
(Views of base on concrete footing)



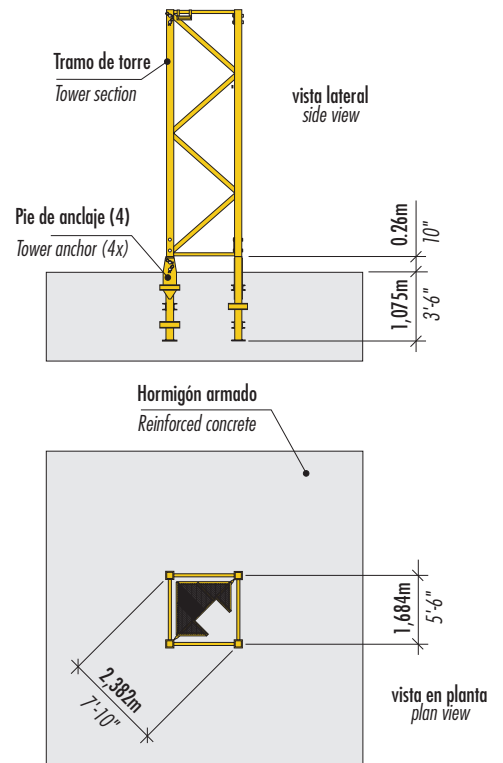
## VISTAS del CARRETÓN

versión estacionaria sobre husillos regulables  
(Views of base on adjustable spindle jacks)



## VISTAS del CARRETÓN

versión móvil sobre rails  
(Views of rail travelling base)



## VISTAS de la ZAPATA de CIMENTACIÓN

con tramos de torre «100 LC» sobre pies de anclaje  
(Views of concrete foundation)







## ALTURAS BAJO GANCHO / Hook heights

Tramos de torre No. of sections	Configuración de torre II Configuration II	Alturas bajo gancho Hook Heights		Tramos de torre No. of sections	Configuración de torre III Configuration III	Alturas bajo gancho Hook Heights		Tramos de torre No. of sections	Configuración de torre IV Configuration IV	Alturas bajo gancho Hook Heights	
		m	ft			m	ft			m	ft
1	100 LC 4m	3,1	10.2	1	100 LC 12m	12,5	41.0	1	100 LC 12m	12,1	39.7
2	100 LC 4m	7,1	23.3	2	100 LC 12m	24,5	80.4	2	100 LC 12m	24,1	79.1
3	100 LC 4m	11,1	36.4	3	100 LC 12m	36,5	119.8	3	100 LC 12m	36,1	118.4
4	100 LC 4m	15,1	49.5	4	100 LC 4m	40,5	132.9	4	100 LC 4m	40,1	131.6
5	100 LC 4m	19,1	62.7	5	100 LC 4m	44,5	146.0	5	100 LC 4m	44,1	144.7
6	100 LC 4m	23,1	75.8								
7	100 LC 4m	27,1	88.9								
8	100 LC 4m	31,1	102.0								
9	100 LC 4m	35,1	115.2								
10*	100 LC 4m	39,1	128.3								
11*	100 LC 4m	43,1	141.4								

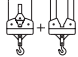
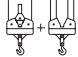
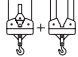
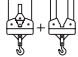
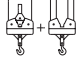
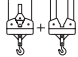
\* El mecanismo de trepado hidráulico debe bajarse después del montaje.  
Lower top climbing unit to base prior to operating crane.

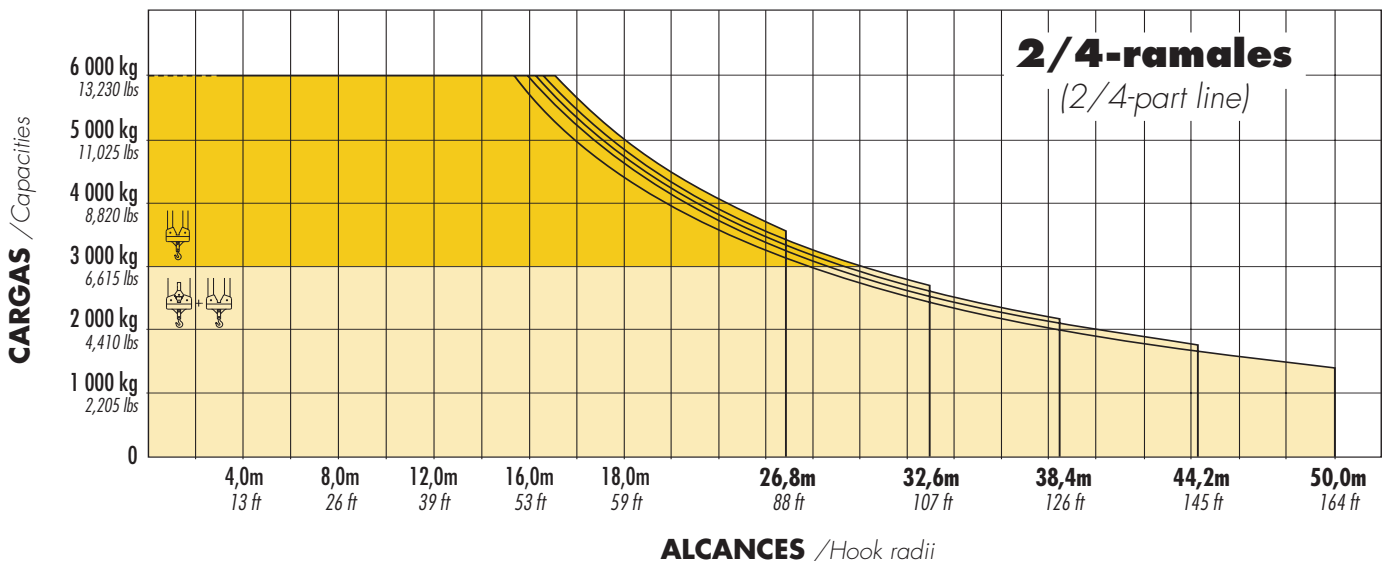
# Alcances y cargas / Radius and Capacities **100 LC**

## 2-ramales (2-part line)

Pluma Jib	Carga máxima Maximum capacity		m ft	2,4 8	12,0 39	14,0 46	16,0 53	18,0 59	20,0 66	22,0 72	26,8 88	30,0 98	32,6 107	36,0 118	38,4 126	42,0 138	44,2 145	50,0 164
50,0m 164 ft	3 000 kg – 29,3m 6,615 lbs – 96.1 ft		kg lbs	3 000 6,615	3 000 6,615	3 000 6,615	3 000 6,615	3 000 6,615	3 000 6,615	3 000 6,615	3 000 6,615	2 920 6,440	2 660 5,865	2 370 5,225	2 200 4,850	1 970 4,345	1 860 4,100	1 600 3,530
44,2m 145 ft	3 000 kg – 30,5m 6,615 lbs – 100.1 ft		kg lbs	3 000 6,615	3 000 6,615	3 000 6,615	3 000 6,615	3 000 6,615	3 000 6,615	3 000 6,615	3 000 6,615	3 000 6,615	2 780 6,130	2 480 5,470	2 300 5,070	2 070 4,565	1 950 4,300	
38,4m 126 ft	3 000 kg – 31,1m 6,615 lbs – 102.0 ft		kg lbs	3 000 6,615	3 000 6,615	3 000 6,615	3 000 6,615	3 000 6,615	3 000 6,615	3 000 6,615	3 000 6,615	3 000 6,615	2 840 6,260	2 530 5,580	2 350 5,180			
32,6m 107 ft	3 000 kg – 31,6m 6,615 lbs – 103.7 ft		kg lbs	3 000 6,615	3 000 6,615	3 000 6,615	3 000 6,615	3 000 6,615	3 000 6,615	3 000 6,615	3 000 6,615	3 000 6,615	2 900 6,400					
26,8m 88 ft	3 000 kg – 26,8m 6,615 lbs – 88.0 ft		kg lbs	3 000 6,615	3 000 6,615	3 000 6,615	3 000 6,615	3 000 6,615	3 000 6,615	3 000 6,615	3 000 6,615							

## 2/4-ramales (2/4-part line)

Pluma Jib	Carga máxima Maximum capacity		m ft	2,4 8	12,0 39	14,0 46	16,0 53	18,0 59	20,0 66	22,0 72	26,8 88	30,0 98	32,6 107	36,0 118	38,4 126	42,0 138	44,2 145	50,0 164
50,0m 164 ft	3 000 kg – 27,6m 6,615 lbs – 90.5 ft		kg lbs	6 000 13,230	6 000 13,230	6 000 13,230	5 700 12,565	4 970 10,955	4 400 9,700	3 930 8,665	3 110 6,855	2 710 5,975	2 450 5,400	2 160 4,760	1 990 4,385	1 770 3,900	1 660 3,660	1 400 3,085
44,2m 145 ft	3 000 kg – 28,8m 6,615 lbs – 94.5 ft		kg lbs	6 000 13,230	6 000 13,230	6 000 13,230	5 970 13,160	5 210 11,485	4 610 10,165	4 130 9,105	3 270 7,210	2 850 6,285	2 580 5,690	2 280 5,025	2 100 4,630	1 870 4,125	1 750 3,860	
38,4m 126 ft	3 000 kg – 29,3m 6,615 lbs – 96.1 ft		kg lbs	6 000 13,230	6 000 13,230	6 000 13,230	6 000 13,230	5 320 11,730	4 710 10,385	4 220 9,305	3 340 7,365	2 920 6,435	2 640 5,820	2 330 5,135	2 150 4,740			
32,6m 107 ft	3 000 kg – 29,9m 6,615 lbs – 98.1 ft		kg lbs	6 000 13,230	6 000 13,230	6 000 13,230	6 000 13,230	5 440 11,995	4 820 10,625	4 310 9,500	3 420 7,540	2 990 6,590	2 700 5,950					
26,8m 88 ft	3 000 kg – 26,8m 6,615 lbs – 88.0 ft		kg lbs	6 000 13,230	6 000 13,230	6 000 13,230	6 000 13,230	5 640 12,435	4 990 11,000	4 470 9,855	3 550 7,825							



# DATOS TECNICOS

## LIEBHERR Grúa torre 100 LC

### Velocidad de elevación y Carga máxima /Hoist unit data

Mecanismo elevación WiW 220 MY 301 18,5 kW mecanismo de elevación asincronico (25 hp AC hoist unit)  • motor de rotor en corto-circuito de polos conmutables con 3 marchas (3-step pole-changing motor) • tambor de cable LS (Lebus-type LS drum)  2P149 4P75	2-ramales (2-part line)				
	marcha gear	carga	velocidad	Capacity	Line Speed
	1	hasta 3 000 kg	5,3 m/min	up to 6,615 lbs	17 fpm
	2	hasta 3 000 kg	27 m/min	up to 6,615 lbs	89 fpm
	3	hasta 1 300 kg	53 m/min	up to 2,865 lbs	174 fpm
	4-ramales (4-part line)				
	1	hasta 6 000 kg	2,6 m/min	up to 13,230 lbs	8.5 fpm
	2	hasta 6 000 kg	13 m/min	up to 13,230 lbs	43 fpm
3	hasta 2 800 kg	27 m/min	up to 6,175 lbs	89 fpm	

**¡NOTA!** Las cargas máximas y velocidades de elevación indicadas variarán dependiendo de la cantidad de cable instalado en el tambor. Este modelo de grúa puede ser equipado con un mecanismo de elevación diferente al especificado en la tabla superior. Para verificar esto, consulte el número de serie de la grúa y el manual de instrucciones de la Liebherr 100 LC para más información.

**NOTE!** Capacities and line speeds indicated will vary depending on the amount of hoist rope installed. This crane model may be equipped with a hoist unit other than that specified in the data above. To verify, check the serial number of the crane and refer to the Liebherr 100 LC Operation Manual for additional information.

### Motores /Drives

Motor (Drive unit)	Kilowattios	Horsepower	Velocidades (Speeds)	
Carrito (Trolley)	0,65/2,0/3,0 kW	0.9/2.7/4.0 hp	9/30/60 m/min	30/98/197 fpm
Mecanismo de giro (Slewing)	5,0 kW	6.7 hp	0.8 rpm	
Traslación (Rail travelling)	2 x 3,0 kW	2 x 4.0 hp	23,0 m/min	75 fpm



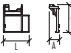
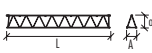
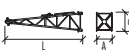
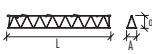
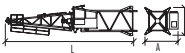
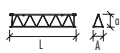
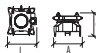
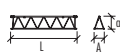


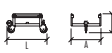
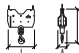

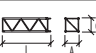
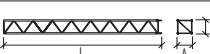



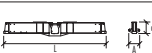



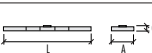
### Potencia eléctrica requerida /Power requirements

440 V — 3 fases — 60 Hz — 55 Amperios — 33 kVA

Esta información está sujeta a cambios sin previo aviso. Para más información, comuníquese con Morrow Equipment.  
Subject to changes without prior notice. For additional information, contact Morrow Equipment.

# Lista de componentes

# LIEBHERR 100 LC

Componente	Dimensiones <i>Largo x Ancho x alto</i>	Peso	Componente	Dimensiones <i>Largo x Ancho x alto</i>	Peso
Cabina <i>Operator's cab</i>	 1,87m x 1,12m x 2,18m 6'-2" x 3'-8" x 7'-2"	440 kg 970 lbs	Tramo de pluma ① <i>Jib butt section</i>	 11,79m x 1,17m x 1,59m 38'-8" x 3'-10" x 5'-3"	1 520 kg 3,350 lbs
Plataforma <i>Cab access platform</i>	 1,68m x 0,67m x 1,82m 5'-6" x 2'-2" x 6'-0"	210 kg 465 lbs	Tramo de pluma ② <i>Jib section</i>	 11,68m x 1,17m x 1,54m 38'-4" x 3'-10" x 5'-1"	1 060 kg 2,340 lbs
Cabeza de torre <i>Tower Top</i>	 5,62m x 1,16m x 1,57m 18'-5" x 3'-10" x 5'-2"	740 kg 1,630 lbs	Tramo de pluma ③ <i>Jib section</i>	 11,83m x 1,17m x 1,63m 39'-10" x 3'-10" x 5'-4"	1 080 kg 2,380 lbs
Parte superior 1 <i>Slewing assembly</i>	 10,88m x 3,6m x 2,37m 35'-8" x 11'-10" x 7'-9"	6 130 kg 13,515 lbs	Tramo de pluma ④ <i>Jib section</i>	 6,02m x 1,17m x 1,53m 19'-9" x 3'-10" x 5'-0"	360 kg 795 lbs
Plataforma giratoria <i>Turntable with support</i>	 2,01m x 1,93m x 1,6m 6'-7" x 6'-4" x 5'-3"	2 590 kg 5,710 lbs	Tramo de pluma ⑤ <i>Jib section</i>	 6,0m x 1,17m x 1,51m 19'-8" x 3'-10" x 4'-11"	270 kg 595 lbs
Contrapluma 2 <i>Counterjib</i>	 11,03m x 1,67m x 1,39m 36'-2" x 5'-6" x 4'-7"	2 630 kg 5,800 lbs	Tramo de pluma ⑥ <i>Jib tip section</i>	 4,16m x 1,17m x 1,72m 13'-8" x 3'-10" x 5'-8"	245 kg 540 lbs
Carrito <i>Trolley</i>	 1,57m x 1,34m x 0,77m 5'-2" x 4'-5" x 2'-6"	190 kg 420 lbs	Pluma (50,0m) ⑥ <i>Jib assembly (164 ft)</i>	①②③④⑤⑥ 50,35m x 1,17m x 1,72m 165'-2" x 3'-10" x 5'-8"	5 260 kg 11,600 lbs
Gancho <i>Hook block</i>	 0,88m x 0,24m x 0,97m 2'-11" x 9" x 3'-2"	150 kg 330 lbs	Pluma (44,2m) ⑥ <i>Jib assembly (145 ft)</i>	①②③④⑥ 44,55m x 1,17m x 1,72m 146'-2" x 3'-10" x 5'-8"	4 910 kg 10,825 lbs
Mecanismo de elevación 3 <i>Hoist unit</i>	 1,5 x 1,36m x 0,71m 4'-11" x 4'-6" x 2'-4"	655 kg 1,445 lbs	Pluma (38,4m) ⑥ <i>Jib assembly (126 ft)</i>	①②③⑥ 38,75m x 1,17m x 1,72m 127'-2" x 3'-10" x 5'-8"	4 570 kg 10,075 lbs
Tramo de torre <i>Tower section</i>	 4,27m x 1,8m x 1,9m 14'-0" x 5'-11" x 6'-3"	1 105 kg 2,435 lbs	Pluma (32,6m) ⑥ <i>Jib assembly (107 ft)</i>	①③④⑥ 32,95m x 1,17m x 1,72m 108'-1" x 3'-10" x 5'-8"	3 740 kg 8,245 lbs
Tramo de torre <i>Tower section</i>	 12,27m x 1,8m x 1,8m 40'-3" x 5'-11" x 5'-11"	2 870 kg 6,330 lbs	Pluma (26,8m) ⑥ <i>Jib assembly (88 ft)</i>	①③⑥ 27,15m x 1,17m x 1,72m 89'-1" x 3'-10" x 5'-8"	3 330 kg 7,340 lbs
Tramo torre de montaje <i>Climber tower section</i>	 4,27m x 2,26m x 2,26m 14'-0" x 7'-5" x 7'-5"	1 370 kg 3,020 lbs	Brazo I <i>Cross member I</i>	 6,66m x 0,71m x 0,75m 21'-10" x 2'-4" x 2'-6"	2 110 kg 4,650 lbs
Mecanismo de trepado 4 <i>Top climbing unit</i>	 8,92m x 2,25m x 2,25m 29'-3" x 7'-4" x 7'-4"	3 460 kg 7,630 lbs	Brazo II <i>Cross member II</i>	 6,66m x 0,78m x 0,75m 21'-10" x 2'-7" x 2'-6"	2 330 kg 5,135 lbs
Contrapeso/bloque A <i>Counterweight A</i>	 0,99m x 0,5m x 2,4m 3'-3" x 1'-8" x 7'-10"	2 550 kg 5,620 lbs	Lastre central/bloque <i>Central ballast B2</i>	 4,0m x 1,2m x 0,46m 13'-1" x 3'-11" x 1'-6"	5 000 kg 11,025 lbs
Contrapeso/bloque B <i>Counterweight B</i>	 0,99m x 0,5m x 1,9m 3'-3" x 1'-8" x 6'-3"	1 950 kg 4,300 lbs	Lastre central/bloque <i>Central ballast D2</i>	 4,0m x 1,2m x 0,23m 13'-1" x 3'-11" x 9"	2 500 kg 5,510 lbs

**AVISO:** Verifiquen los pesos y dimensiones de los componentes antes de ser instalados. *Weights & dimensions are approximate. Verify weights & dimensions of components before lifting.*

- 1 Incluye cabeza de torre, cabina, mecanismo de giro, tirantes, pista de giro y asiento pista. *Includes tower top, pendants, cab, swing motor, slewing ring and slewing ring support.*
- 2 Incluye contrapluma, mecanismo de elevación sin cable, tirantes y barandillas. *Includes counterjib section, hoist unit, pendants and handrails. Does not include wire rope.*
- 3 18,5 kW mecanismo de elevación asincronico sin cable. *25 hp AC hoist unit. Does not include wire rope.*
- 4 Incluye plataformas con barandillas, grupo hidráulico, escalera, brazos soporte y bastidor. *Includes tower frame with platforms and handrails, hydraulic unit with ram and support shoes, and ladder.*
- 6 Incluye tramos de pluma, carrito, cables de traslación carrito, tirantes de suspensión de la pluma, mecanismo de traslación del carrito y pernos de conexión. *Jib assemblies consist of jib sections, trolley, trolley drive unit with wire rope, pendant bars and connecting pins.*

El hogar americano de  
**LIEBHERR**

**Morrow Equipment**  
C O M P A N Y, L. L. C.

3218 Pringle Road SE • P O Box 3306  
Salem, Oregon 97302-0306 USA  
Tel. 503.585.5721 • Fax. 503.363.1172  
www.morrowequipment.com

**Morrow Maquinarias**  
de México, S.R.L. de C.V.

Santa Teresa n.º 64 – Despacho 101 • Colonia Tepalcates  
CP 09210 • México DF, México • Tel. 5 452 0775

[Houston, TX: Tel. 713 733 9461 • Fax. 713 731 9405]

Atlanta, GA • Charlotte, NC • Chicago, IL • Denver, CO • Honolulu, HI • Houston, TX • Los Angeles, CA • Las Vegas, NV  
Millwood, NY • St. Louis, MO • San Francisco, CA • Seattle, WA • Miami, FL • Tampa, FL • Washington, DC • Sydney, Australia  
Wellington, New Zealand • Vancouver, BC, Canada • Toronto, ON, Canada • México DF, México • Monterrey, México